



Imprezzeo Standalone Installation Instructions

Version: 1.0
Release Date: 29 September 2011

IMPREZZEO STANDALONE

The Imprezzeo Standalone provides the ability to install all the necessary components that the Imprezzeo Engine requires, as well as the Imprezzeo Engine itself and a simple demonstration system.

The Imprezzeo Standalone is intended for Evaluation purposes only. It is not intended to be deployed in a Production environment. Support will not be provided if this is installed as a Production system.

The Imprezzeo Standalone does not allow the client to evaluate the facial technology of Imprezzeo. Refer to the Face Recognition section for further instructions on enabling the facial technology component.

PRE-REQUISITES

HARDWARE

It is highly recommended that you use a Server with the following configuration:

- Dual Xeon Quad Processor.
- 160GB HDD.
- Minimum of 4GB of RAM.

As a rule of thumb, Imprezzeo requires approximately 4GB RAM for every 1 million images. For the Imprezzeo Standalone, it is strongly recommended that you limit the size of your test set of images to 500,000 images.

SOFTWARE

Before you install the Imprezzeo Standalone, you will need to install a Java runtime environment and configure either the JAVA_HOME or JRE_HOME environment variable appropriately. Configure the JAVA_HOME environment variable to point to the location of the Java SDK if you have installed the Java SDK. Otherwise, configure the JRE_HOME to point to the location of the Java JRE.

IMPREZZEO STANDALONE INSTALLATION

- Download the Imprezzeo Standalone from the Imprezzeo Support site, <http://support.imprezzo.com>. This file is named as *imprezzo-standalone-
<release>.zip*.
- Request an Imprezzeo Evaluation licence at the Imprezzeo web site, <http://www.imprezzo.com>.

An Imprezzeo Licence file will be emailed to you.

Imprezzeo Standalone

- Unzip the *imprezzo-standalone-<release>.zip* to a location on your file system, e.g. C:\Imprezzeo.
- Once the file is unzipped successfully, copy the Imprezzeo Licence file, *imprezzo-licence.txt*, to the <Installation Directory>\standalone\webapps\imprezzo-engine\WEB-INF directory.
- Next, go to the *bin* sub-directory, which is off the *standalone* sub-directory, i.e.
CD \<Installation Directory>\standalone\bin
- For Linux, run **startup.sh**. For Windows, run **startup.bat**.

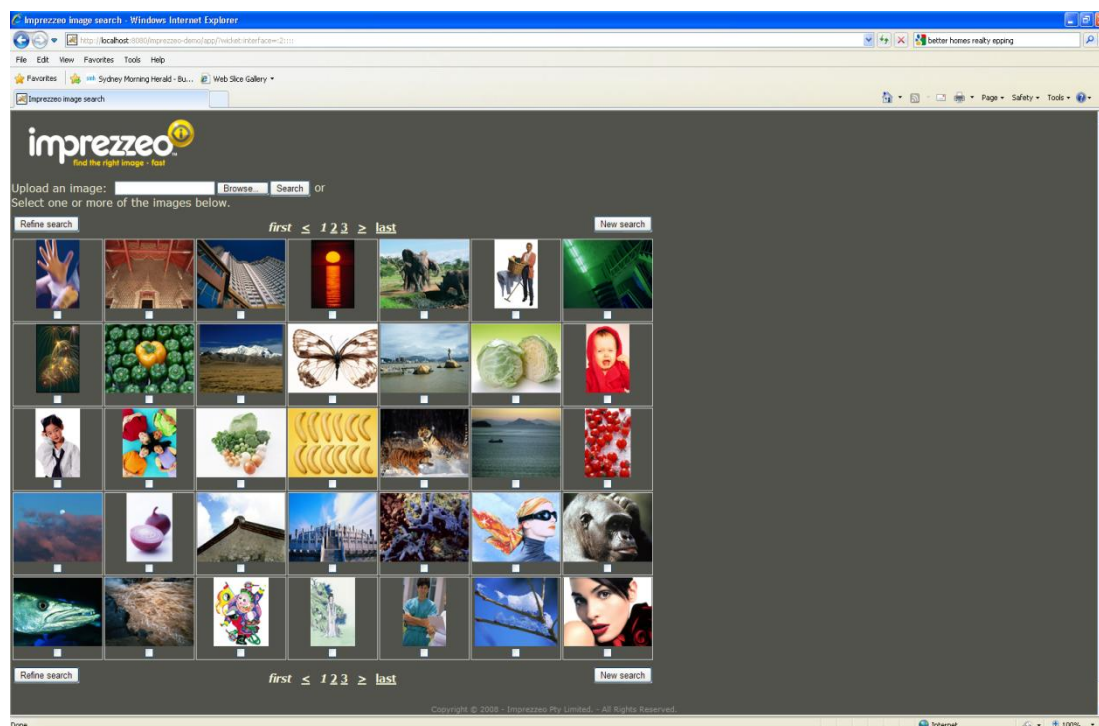
This file starts up the Apache and Tomcat environment and the Imprezzeo Engine. If the environment does not start up correctly, check the JAVA_HOME or JRE_HOME environment variables are correctly configured as outlined above.

- Leave this batch job running in the background. It acts as the console for Apache Tomcat.
- To import images into the Imprezzeo Repository, simply copy the images to the standalone\webapps\imprezzo-demo\image-import directory. Alternatively, edit the *import.list* file in the standalone\webapps\imprezzo-demo\WEB-INF directory to point to the parent directory of the images.

You can copy a whole directory, including any sub-directories if you wish. As the Imprezzeo Engine ingests the images, they will be deleted from the webapps/imprezzo-demo/image-import directory.

We recommend using images that have a maximum dimension of 600 pixels.

- The Imprezzeo Standalone installs a basic Demonstration System which will allow you to quickly use and test Imprezzeo.



Imprezzeo Standalone

- Once the images are processed, using your browser, go to <http://localhost:8080> to view the Imprezzeo Demonstration system.
- The Imprezzeo web service is located at <http://localhost:8080/imprezzeo-engine>.

ABOUT

Imprezzeo is a visual search technology company. Imprezzeo Image Suite provides an enterprise level solution that complements existing search systems, making it easier and faster for users to find the images they need.

Our patented technology provides developer tools to enable rapid integration of visual similarity search and facial recognition functionality into existing search and content management systems.

Web: <http://www.imprezzeo.com>

Contact: info@imprezzeo.com